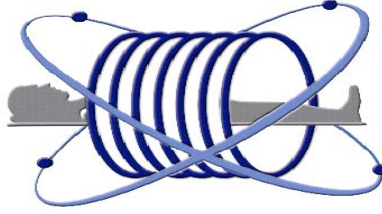


Houston Medical Imaging



3310 Richmond Avenue
Houston, Texas 77098

Info@hmixray.com

www.hmixay.com

Tel (713) 797 1919 Fax (713) 383 9933 Scheduling (713) 589 5231

A Quarterly Newsletter - for the care of your patients

Issue Number 1 Winter 2008

Creatinine/GFR capability

Houston Medical Imaging has recently purchased a device to determine both creatinine and, indirectly, GFR with the use of a finger stick.

We are now happy to perform creatinine and GFR determinations in your patients to facilitate stat examinations or help ease the coordination of outpatient exams for patients who do not have easy access to a laboratory.

Physician Ownership

Houston Medical Imaging remains an independent, radiologist owned and operated imaging facility.

"HMI continues to invest in new technology despite the challenges of DRA and declining fee schedules," says Randall Stenoien MD, CEO. "Physicians must maintain and set standards for patient care."

The physicians of HMI take a longterm perspective on diagnostic imaging; HMI is very well prepared to survive and flourish in these difficult, market-disruptive times.

Scheduling and Authorization

HMI has elected to bring scheduling, benefit verification and authorization services in-house.

Our dedicated personnel will do their utmost to ease the burdens imposed upon you by insurance entities, medicare and medicaid services.

Recognize that certain payers who require a peer to peer review will need to speak directly with your office or the ordering physician. We must work together to ensure that your patients receive the diagnostic services that you deem appropriate.

New Innovative Radiology Associate

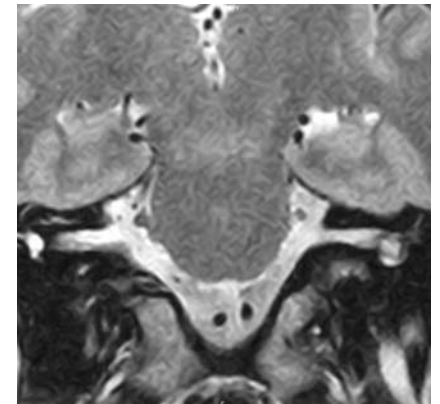
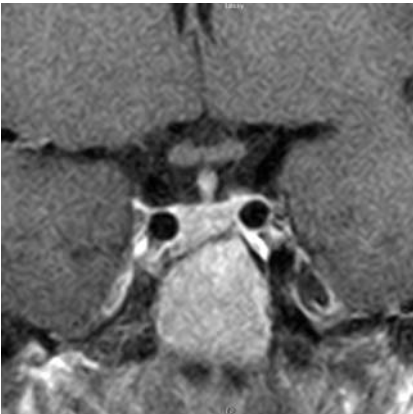
Innovative Radiology is proud to announce the arrival of Dr. John Marriott, who will assume duties on May 1.

Dr. Marriott has special skills and interests in cross sectional imaging and CT angiography. He will join the group at Conroe Regional Medical Center and place an emphasis on outpatient imaging both at the hospital and Lake Area Imaging center.

New technology....

Hitachi Altaire Upgrade Complete

HMI is pleased to announce a successful upgrade of the Hitachi Altaire 0.7 T magnet at their Richmond facility. The upgrade is a combination of software and hardware, enabling the use of 8-channel coils. To this end, HMI has purchased an 8 channel neurovascular coil and 8 channel body coil. Combining 8 channel coils and multiplanar acquisition technology, noise to signal ratios enable us to provide images comparable to a high field magnet.



Pictured at left is a thin post-contrast pituitary image. Above is a T2-sagittal midline lumbar spine image. At right is a T2-sagittal midline cervical image and top right is a coronal images taken through the IAC. Below the Altaire.

